

Dear Valued Customers :

January, 2025
MARKTEC Corporation
Quality Assurance department

Notice of change in parts for Super Light D-10L

Thank you very much for your continued business. Due to the discontinuation of parts used in the Super Light D-10L, we will be changing the parts as detailed below.

Sincerely yours,

Note

1. Product Name

- Super Light D-10L

2. Parts to Change

- LED board
- LED circuit (Control board)
- Spot light reflection mirror

※For details, please refer to the exploded view of D-10L (Fig.2) on the next page.

3. Supply Parts

		変更前	変更後
LED light source unit	Model	10UL	11UL
	Product code number	M107-1200004	M107-0000093
LED board	Model	10ULL	11ULL
	Product code number	M107-0000017	M107-0000092

4. Reason for Change

Due to the discontinuation of parts used in D-10L, we will be changing the parts as detailed below.

5. Change Date

From products manufactured in January 2026, we will start selling the D-10L with the changed parts, as well as the LED light source unit (11UL) and LED board (11ULL).

※The LED light source unit (10UL) and LED board (10ULL) will be sold in parallel with the above until July 2027.

6. Maintenance support

For D-10L manufactured before December 2025, we will provide maintenance support until July 2027.

※For D-10L models that do not have the LED board (11ULL) applied after August 2027, we will also replace the LED circuit (control board) when applying the LED board (11ULL) (Paid support) .

※Please note that D-10L manufactured before December 2025 is not compatible with LED boards (11ULL).

7. Others

- There is no impact on quality due to part changes.
- For the D-10L which applies an LED board (11ULL), a nameplate will be affixed to the handle for identification purposes (Fig.1).
- The timing of changes in item 5 and maintenance in item 6 may vary from the above dates due to inventory issues.
- If you have any questions, please contact our sales staff.

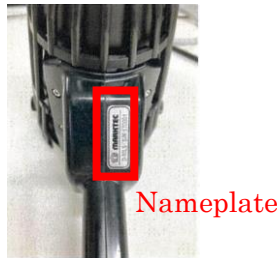
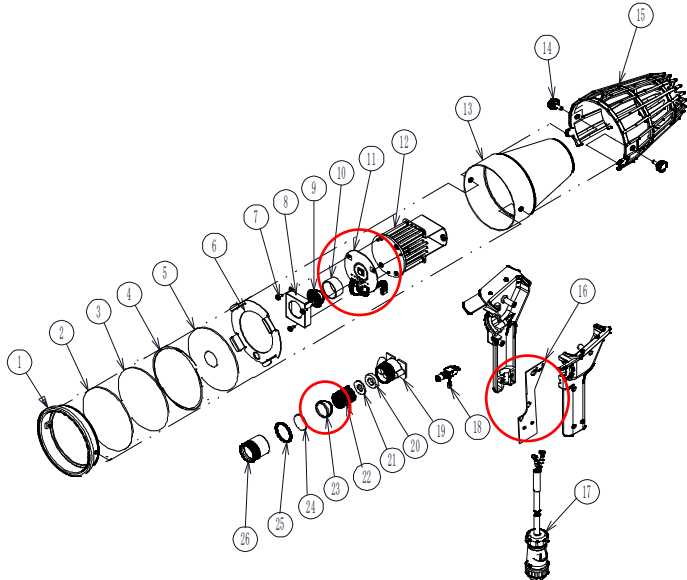


Fig.1 Image of nameplate



1. mount for filter	2. protection filter	3. dichroic filter
4. spring	5. mount panel	6. filter mount
7. screw fixing LED circuit board	8. mount for lens	9. LED lens
10. Lens collar	11. LED board (UV)	12. Heatsink
13. lamp body	14. screw fixing filter mounting flame	15. protection guard
16. LED circuit (Control board)	17. Waterproof metal connector	18. spot light switch
19. spot light lamp socket	20. spot light collar	21. visible light LED board
22. spot light reflector holding spring	23. spot light reflection mirror	24. spot light whole surface glass
25. O ring	26. spot light tube	

Fig.2 Exploded view of D-10L